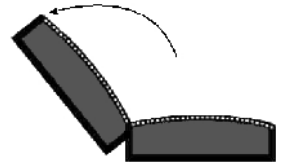


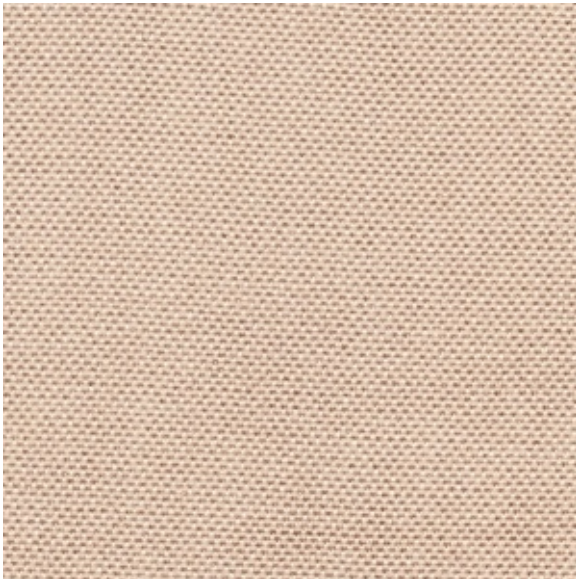
KLAKS

www.klaks.eu

Kontakt:
service@klaks.eu



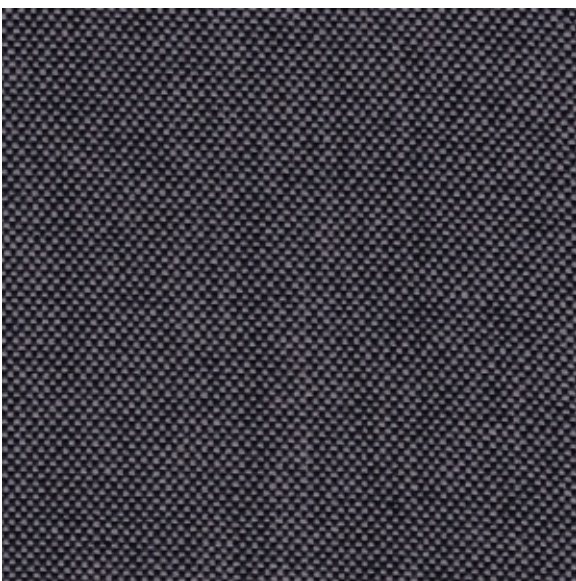
Stoffgruppe FG



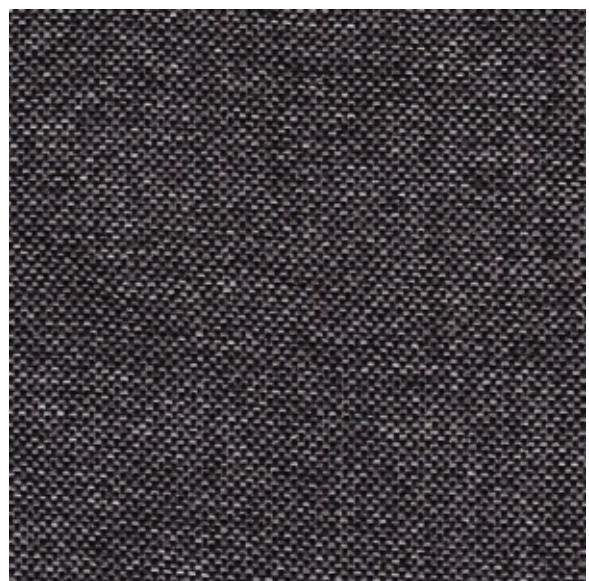
Beige (10-107)



Schwarz (10-11)



Schwarz-Grau (12-202)

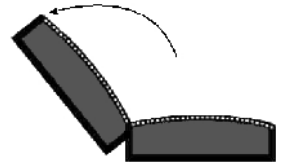


Schwarz-Hellgrau (10-359)

KLAKS

www.klaks.eu

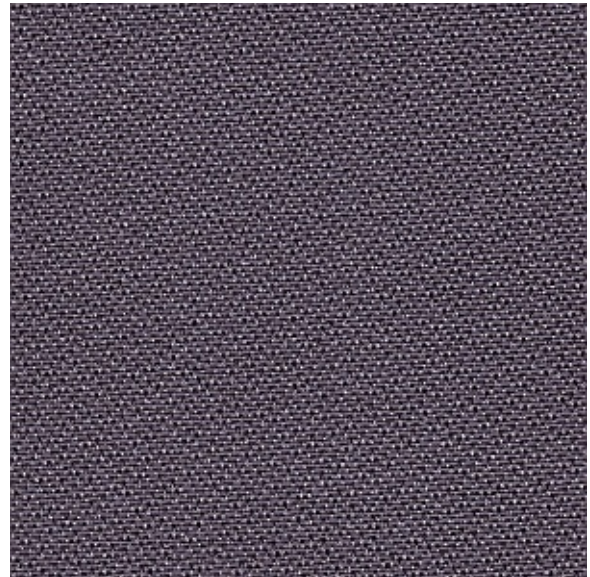
Kontakt:
service@klaks.eu



Stoffgruppe FG



Striped (10-798)



Anthrazit (15-35)

Stoffgruppe WL

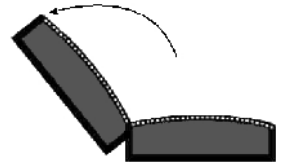


Beige (10-605)

KLAKS

www.klaks.eu

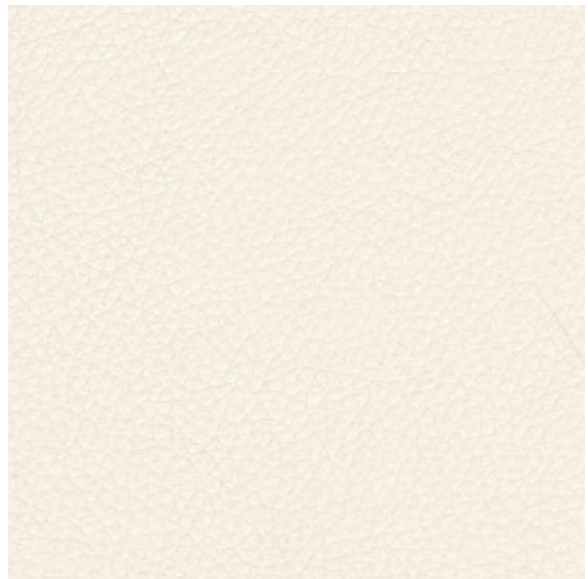
Kontakt:
service@klaks.eu



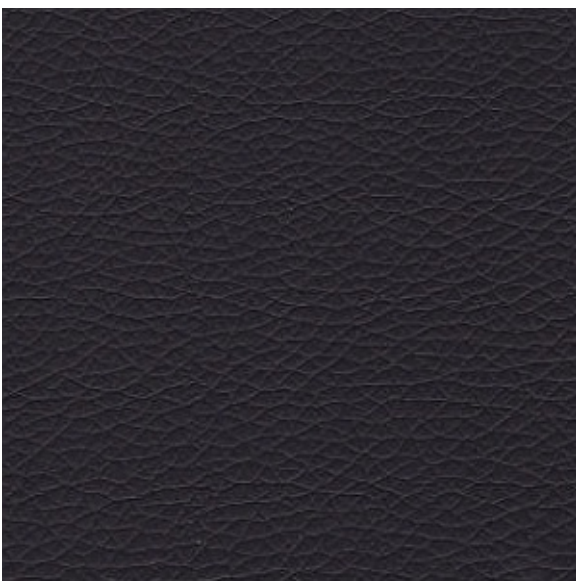
Stoffgruppe LT



Braun (B32)



Beige (B31)

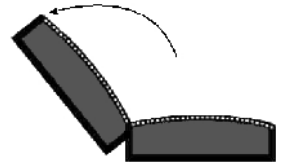


Schwarz (Z601)

KLAKS

www.klaks.eu

Kontakt:
service@klaks.eu



Stoffgruppe MF



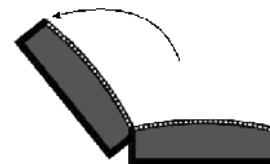
Aruba-Blau (MY-01)



Flash-Rot (28-11)



Taupe-Braun (28-01)



Verfügbare Varianten 2012

Stoff	Farbe	Code	Casablanca	Humphrey	Marilyn	Atlanta
MF	Aruba-Blau	MY-01	x	x		x
	Flash-Rot	28-11	x	x		x
	Taupe-Braun	28-01	x	x		x
LT	Braun	B32				
	Beige	B31			x	
	Schwarz	Z601			x	
WL	Beige	10-605			x	
FG	Beige-Sand	10-107		x		
	Schwarz	10-11				
	Schwarz-Grau	12-202		x		
	Schwarz-Hellgrau	10-359			x	
	Anthrazit	15-35		x	x	
	Striped	10-798			x	
Stoff	Farbe	Code	Manga	Katana	Zero	Seven
MF	Aruba-Blau	MY-01				
	Flash-Rot	28-11				
	Taupe-Braun	28-01				
LT	Braun	B32	x	x		
	Beige	B31	x	x	x	x
	Schwarz	Z601	x	x	x	x
WL	Beige	10-605				
FG	Beige-Sand	10-107				
	Schwarz	10-11		x		
	Schwarz-Grau	12-202				
	Schwarz-Hellgrau	10-359				
	Anthrazit	15-35		x		
	Striped	10-798				